

EIS technical studies and assessments

The state significant EIS will include a range of technical studies and assess the economic, environmental and social impacts of the project. The following studies are being prepared to support the EIS:

Biodiversity – In order to meet legislative requirements, a draft biodiversity development assessment report is being prepared. If offset obligations are required, these will be outlined in the report.

Aboriginal heritage – Premise archaeology team has met with local Aboriginal parties and completed a survey of the site. A draft Aboriginal cultural heritage report will shortly be issued to registered parties for review and comment.

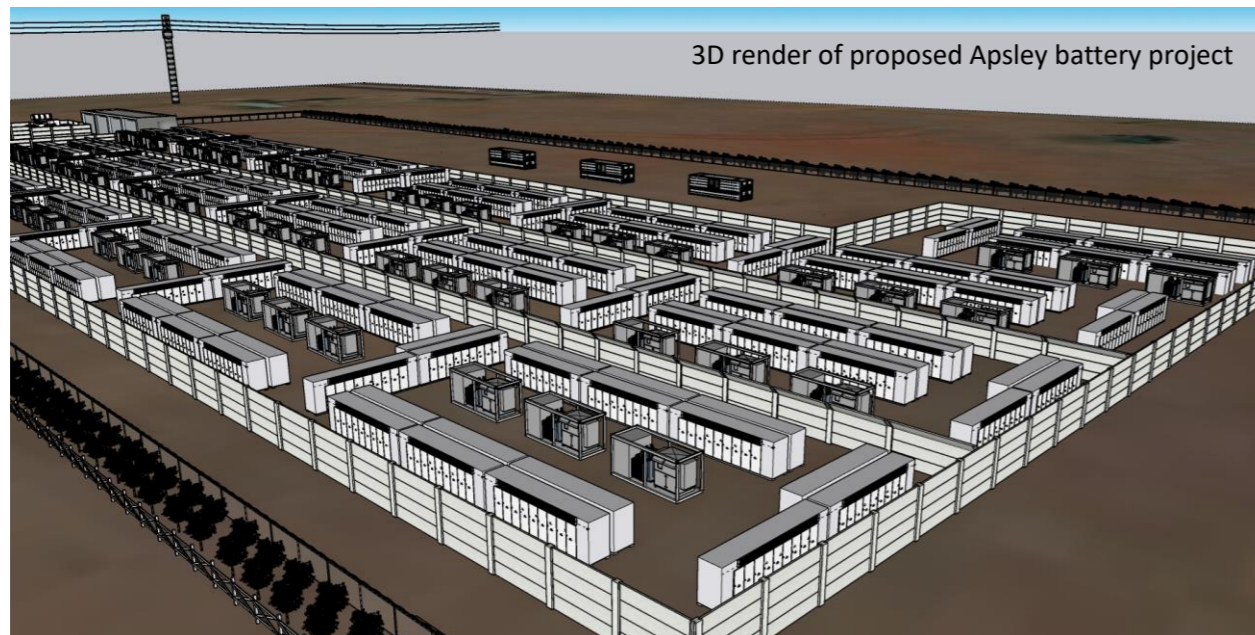
Visual – Iris Visual Planning and Design are preparing a Visual Impact Assessment to assess all components of the projects in the context of key viewpoints.

Noise – Assured Environmental are currently preparing a specialist noise impact assessment to consider the potential for noise impacts during construction and operation to nearby non associated residential receivers in accordance with the Noise Policy for Industry

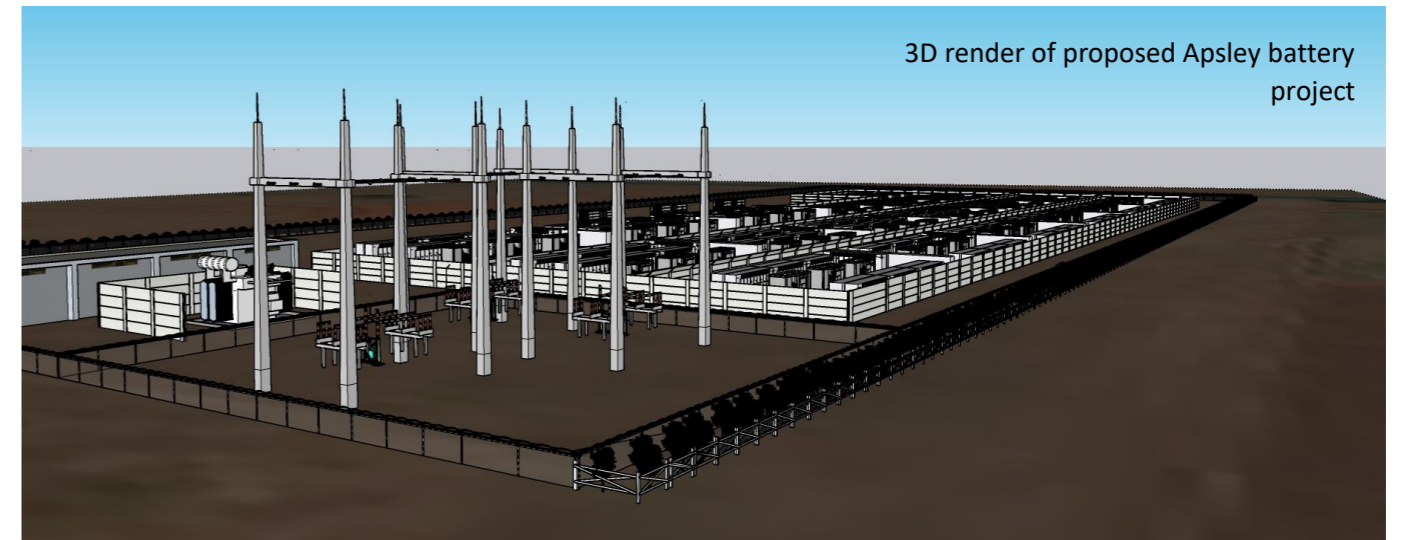
Social impact – Mara Consulting have been engaged to prepare a Social Impact Assessment which examines the potential impacts and benefits of the project and how they might be experienced by the community. It also includes ways to minimise and avoid impacts on the community.

To have your say and contribute to the social impact assessment, complete the survey here: <https://www.surveymonkey.com/r/ApsleyBESS>

Traffic and transport – A traffic assessment will consider project impacts primarily in relation to site access, and the capacity and condition of existing roads.



3D render of proposed Apsley battery project



3D render of proposed Apsley battery project

ACEnergy is inviting the community to attend a Community Information Session for the Apsley Battery state significant development project.

Plans are progressing for the Apsley Battery project at 9010 Mitchell Highway, Apsley. ACEnergy are currently preparing the technical reports to support the Environmental Impact Statement (EIS) for the project which will be submitted to the Department Planning and Environment in April 2022.

As plans develop ACEnergy would like you to attend a community information session. Registration details are provided below.

About ACEnergy

ACEnergy are an Australian owned and operated company. We have successfully delivered projects across regional Australia and are committed to working with the community as we plan, build and deliver our solar and battery projects.

Our renewable projects are located in regional locations across NSW and Victoria, including Stanhope, Girgarre, Numurkah, Katamatite, Echuca, Robinvale, Derby and Dubbo.

Find out more

Community information sessions will be online to provide the greatest opportunities for people to take part and engage with the project. These sessions will provide you with more detail about the proposed Apsley Battery project.

Sessions will be held on the following dates:

- Tuesday 12 April, 12:30pm-1:30pm
- Wednesday 13 April, 6:30pm-7:30pm

Register for a time/day that suits you by visiting the project website: <https://apsleybess.online/>
Alternatively, please contact our engagement team:

- info@apsleybess.com.au
- 1800 577 442.



- Legend**
- Subject Site
 - Proposed BESS
 - Lot
 - Road
 - Easement
 - Transmission Lines**
 - 132kV


ACENERGY
 Apsley Battery Energy Storage System

Sources: © State of NSW, Department of Customer Services, Spatial Services 2021
 GDA2020 MGA Zone 55 File: 221284_01.aprx Prepared By: adam.davis Date: 23/09/2021

About the project

We hope to deliver the Apsley Battery project by mid 2024, with construction commencing in early 2024.

The project will provide a battery with storage of 160 megawatts, 640 megawatt hours and will impact a land area of up to 6 hectares.

The battery will assist with grid stability by enabling power to be stored in off peak times and reintroduced to the grid at peak times.

The project will assist in the rapid decarbonisation initiative underlaid by the NSW government's critical Electricity Infrastructure Roadmap.

Employment opportunities

During construction, the facility will provide opportunities to employ around 50 people and during operation, around 3-4 people.

There will be ongoing casual work for landscape maintenance.

Planning Process

It is anticipated that the EIS will be lodged with the NSW Department of Planning and Environment in early 2022. Over the next couple of months, before we lodge the EIS, we will be engaging with the local community to provide you with more information, answer any questions you may have and listen to your feedback.

Prior to EIS lodgement, the community can find out more about the proposed battery project by:

1. Visiting our website:

<https://apsleybess.online/>

2. Emailing or calling a member of our community engagement team

3. Attending an information session (see overleaf).

Once the EIS is lodged, there will be a formal exhibition process for a minimum of 28 days. During this time the community will have an opportunity to write formal submissions to the Department of Planning and Environment and provide further feedback.

